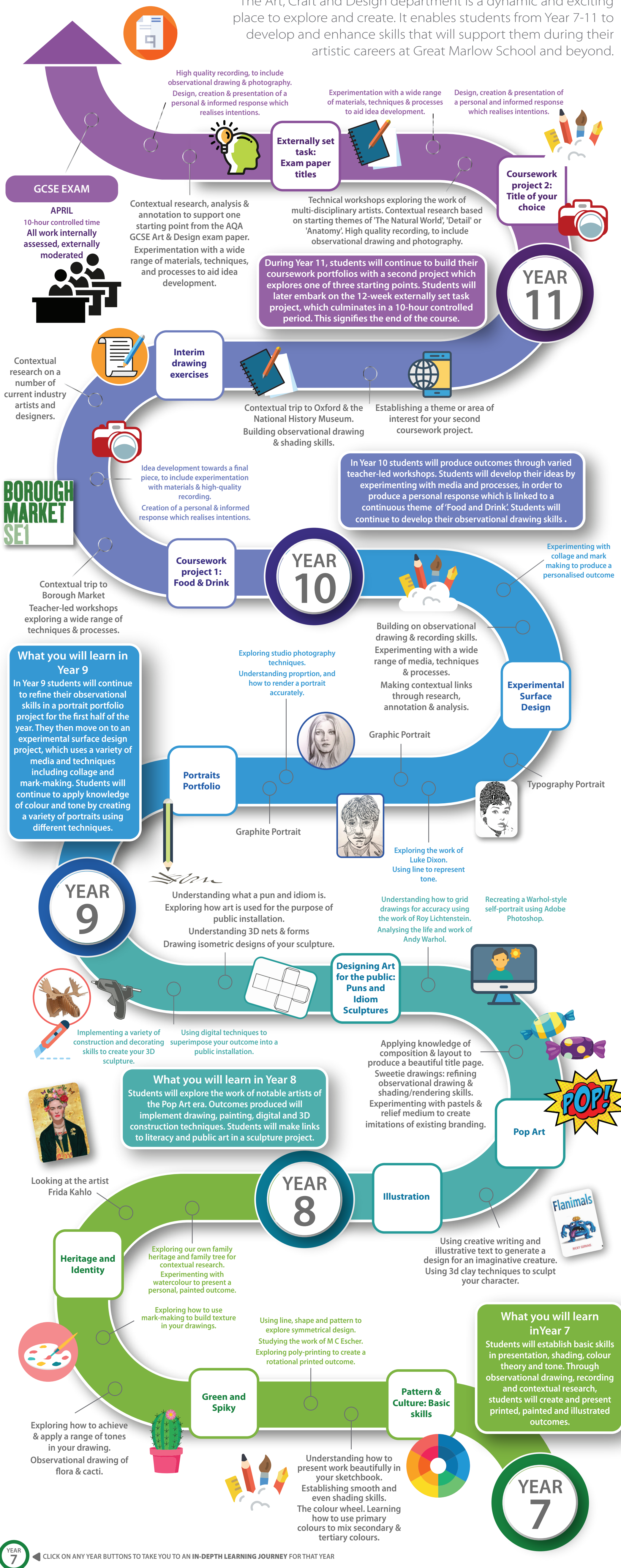




ART, CRAFT & DESIGN LEARNING LADDER

The Art, Craft and Design department is a dynamic and exciting place to explore and create. It enables students from Year 7-11 to develop and enhance skills that will support them during their artistic careers at Great Marlow School and beyond.



YEAR 7 CLICK ON ANY YEAR BUTTONS TO TAKE YOU TO AN IN-DEPTH LEARNING JOURNEY FOR THAT YEAR