



Great Marlow School

Excellence • Compassion • Integrity

# Welcome to our **Year 11** **Information Evening**

Opportunities are Created • Potential is Realised • Excellence is Achieved

# Year 11 Information Evening



Great Marlow School

*Excellence • Compassion • Integrity*

## Aims

- To give you an insight into changes at GCSE level and the expectations we have of students.
- To point you in the right direction of help and support that is available to you as a parent/carer
- To inform you of the support on offer within school and opportunities for communication

# Year 11 Vision



# Year 11 Vision & Values



Great Marlow School

Excellence • Compassion • Integrity

## Ultimate aim: Get the Grade

This vision is aiming that all students know their goals and are reaching on them with a plan A, B and C for post-16 life.

- Year 11s are identified as **compassionate, respectful** and **resilient** members of the school community
- All students feel confident in taking **responsibility** for their GCSE studies
- Good communication between all three stakeholders - PARENTS/CARERS, STUDENTS and SCHOOL



respect

readiness

resourcefulness

resilience

reflection

responsibility



# KS4 Curriculum



# Grading System

- **GCSE students work towards Grades 9-1**

9

8

7

High Achievement

6

5

Strong Pass

4

Standard Pass

3

2

1

U

Ungraded

It is important to be aware of the requirements for various courses post-16.

# Curriculum changes



Great Marlow School

Excellence • Compassion • Integrity

**Core PE** for all students in their form groups.

## **RSHE (Relationships, Sex and Health Education)**

One lesson per week (with form tutor and one other teacher).

Covers important topics such as; Mental wellbeing and health, sex and relationships, managing money, careers and other life skills.

There is NO GCSE for this course.



# How to help your child



Great Marlow School

Excellence • Compassion • Integrity

- ✓ Perspective on future options – a plan and a back-up plan.
- ✓ Open communication with the school.
- ✓ A space for working and revising.
- ✓ Time to relax and exercise/hobbies.

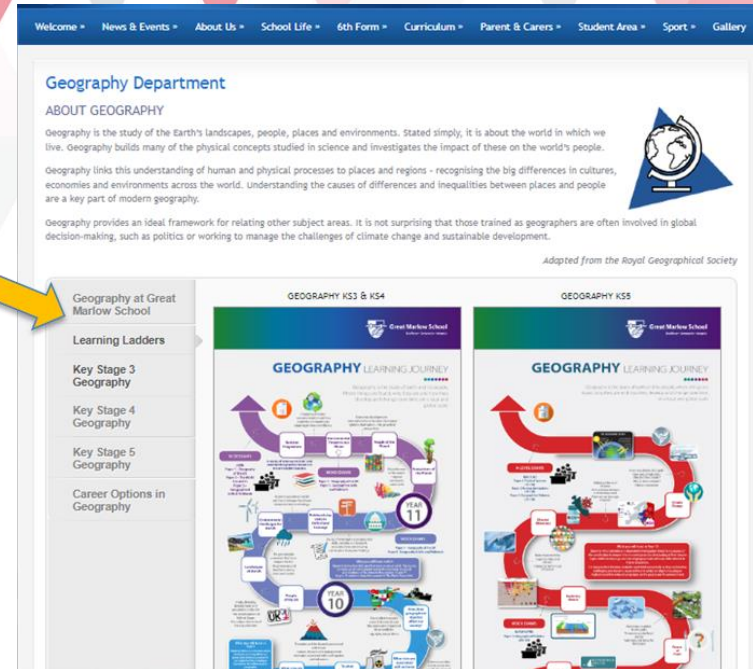
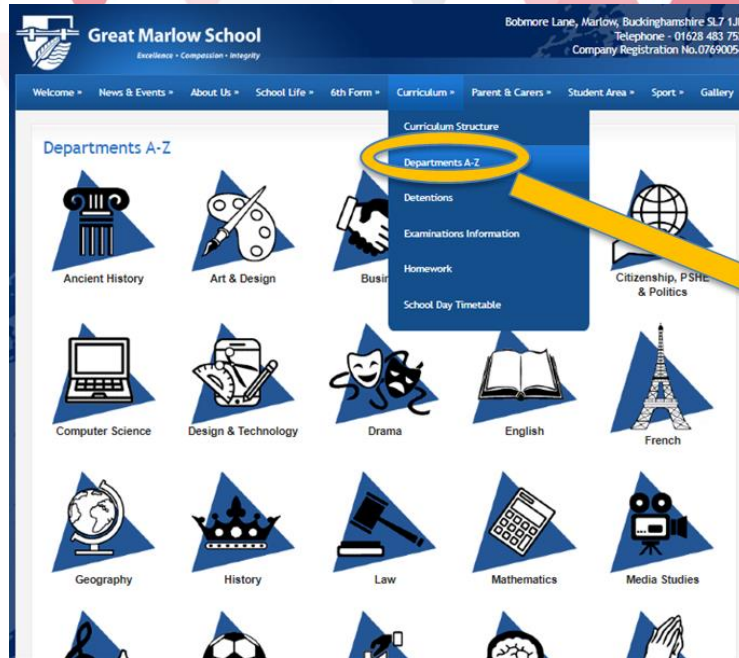
For information about the different GCSE exam boards and courses there is an information booklet available on the website to access.

*GMS homepage – About us – GCSE Options Information*

## Get the Grade

# Learning Ladders

For information on the learning journey of your child(ren) please see our new Learning Ladders on the school website. These are available under the “curriculum” tab



# Religious Studies drop-down sessions



Great Marlow School

*Excellence • Compassion • Integrity*

- Students will participate in 3 two-hour 'drop-down' sessions
- Utilise discussion, debate and problem-solving
- Aims to support the wider vision and values of the school
- Meets our statutory obligations by;
  - ✓ Inspiring students to be compassionate contributors to a better society
  - ✓ Demonstrating 'My Personal Best' with particular focus on: reflection, resilience and respect



# Planners

Students to note ALL homework and deadlines in their planners when set.

# Microsoft Teams

Staff to post homework assignment details on MS Teams – calendar

# Parents

Encourage completion of homework to the best of the student's ability

# Support for students



<b>11K1</b>	Mrs Wheeler (Wed, Thurs, Fr)/ Mrs M Cadogan (Mon, Tues)
<b>11K2</b>	Mrs M Seeley/ Mr N Maguire (Fri)
<b>11K3</b>	Miss R Addy
<b>11H1</b>	Mrs L Brassington/ Mr G Pendlebury (Fri week 1)
<b>11H2</b>	Mrs M Bolsover (Mon, Tues) /Mrs K Christianson (Wed, Thurs, Fri)
<b>11H3</b>	Mrs J Hayward (Mon-Wed)/ Mr M Williams (Thurs, Fri)
<b>11E1</b>	Miss V Coates / Mrs L Fletcher (Mon)
<b>11E2</b>	Mrs M Collett
<b>11E3</b>	Mr O Kidd

Email addresses: **[Initial][Surname]@gms.bucks.sch.uk**

# Year 11 Student Support



**Great Marlow School**

*Excellence • Compassion • Integrity*

**Miss Aylett-Livesley**

**Mrs Jen Webster**

**Director of Learning Year 11**

**Year 11 Student Support Officer**

- Continued strong relationship with cohort
- Consistent support given
- Consistent communication home

Located in the KS4 Office (opposite G block)

**Opportunities are Created • Potential is Realised • Excellence is Achieved**

# Key Staff Members



**Great Marlow School**

*Excellence • Compassion • Integrity*

**Neil Maguire**

Designated Safeguarding  
Lead (DSL)



**Karen Craig**

Deputy DSL



**Anna Gifford**

Safeguarding Officer



**Kevin Ford**

Safeguarding  
Headteacher



**Sheryl Paul**

Safeguarding Officer



**Opportunities are Created • Potential is Realised • Excellence is Achieved**



# Student Support



**Great Marlow School**

*Excellence • Compassion • Integrity*

**Assistant Headteacher & Director of Inclusion (Special Educational Needs): Mrs V Todd**

**Attendance Officer: Mrs S Radnedge**

**Pupil Premium Coordinator: Mrs A Gifford**

**Careers Officer: Mrs G Southon**

**Opportunities are Created • Potential is Realised • Excellence is Achieved**

# Safeguarding and Wellbeing



- Online Safety – [nationalonlinesafety.com](https://nationalonlinesafety.com)
- Vaping – can contain harmful substances
- Sleep – good routines
- Mental Health - it is important to stay healthy

# Bucks Mental Health Partnership



To help support the Mental Health of our young people, Great Marlow has teamed up with the Bucks Mental Health Support Team (MHST).

## Workshop evenings

1. Promoting positive behaviours - Wednesday 11<sup>th</sup> October 6pm
2. Anxiety - Tuesday 5<sup>th</sup> December 6pm
3. Low mood - Wednesday 6<sup>th</sup> March 6pm
4. Self-harm - Tuesday 30<sup>th</sup> April 6pm

Details of how to sign up for the in person Parent Sessions delivered by MHST will follow in a separate, later correspondence

# Tutor Time



# Y11 Form Time



Great Marlow School

Excellence • Compassion • Integrity

Monday



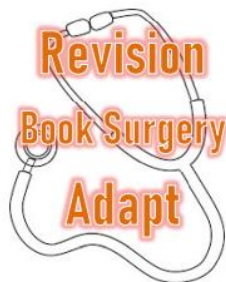
Equipment  
Check

Tuesday



1:1

Wednesday



1:1

Thursday



Uniform  
Check

Friday



# GMS Reading Project



Great Marlow School

Excellence • Compassion • Integrity

- The reading project is all about exposure to a range of authors, genres and language
- A growing number of academic studies show that promoting reading can have a major impact on children and adults and their future
- A reminder that these are not the GCSE exam texts



# **Uniform & Equipment Reminders**



# Uniform & Equipment



- **Hair** – No extreme styles or unnatural looking colours
- **Nails** – Nude colours only, no false/acrylic nails
- **Jewellery** – One simple ring, a single stud in each ear (each removed for PE)
- **Skirts** – Not rolled at the waistband, logo clearly displayed
- **Shoes** – Smart and black, not trainers or trainer-style
- **Sports equipment** – in a bag, only used in designated areas at specified times.
- **Trousers** – not jeans
- **Jumpers** – Black V neck jumper, no branded sweatshirts or hoodies. Jumper is an additional layer – blazer must be worn
- **Blazers** – To be worn every day, COATS must be worn over the top if required
- **Tie** – worn every day

## Essentials

- ☐ Planner
- ☐ Pencil
- ☐ Pen x2
- ☐ Ruler & Protractor
- ☐ Whiteboard pen
- ☐ Glue stick
- ☐ Calculator



A note from home is needed for any reason that you are unable to wear the appropriate uniform – this will then be considered by tutor/DoL



# Attendance & lates

*Every school day matters!*



**Good attendance and punctuality underpin everything that we do.**

**90% attendance means up to 4 hours learning missed every week plus homework and preparation for controlled assessments.**



- 1. If late to school, there will be a sanction of a 15 minute break detention**
- 2. Failure to attend results in a 30 minute after-school detention the following Thursday**
- 3. Failure to attend results in a 1hr after-school detention on the Friday**



**Attend Today, Achieve Tomorrow**



### **Late System: Daily Process Monday-Friday**

1. Tutor marks student who is not in form room by **8.35am as late on register** (and by how many minutes)
2. Tutor tells student that they need to attend a **same day 15-minute late detention** in the hall at the start of **break 2**
3. Student **attends same day late detention at break 2**. They are ticked off on attendance sheet by Director of Learning on duty (shared with DOL)
4. If student hasn't attended break late detention, they will need to attend the **next day's late detention** to make up the time.

\*If student has already missed one late detention and is late again the next day, they will now need to attend x 2 break sessions....





## **Late System Process: Further Consequences**

- **DOL reviews break 2 late detention attendance** for the week against number of days the student was late to school (Monday-Friday)
- **DOL shares this information with tutors** the following Monday
- Tutor then makes contact home by Tuesday evening using template email, for students who **have not** attended the required break time sessions- to explain that this is now escalated to **30 minute Thursday afterschool detention with a KS4 DOL**
- For students who **do not attend** the 30 minute afterschool detention, DOL to make contact home and explain **escalation to 1 hour afterschool detention with a member of the leadership team.**

# Important Dates



# Important Dates



Great Marlow School

Excellence • Compassion • Integrity

## School Google Calendar

Today: September 2023

Print Week Month Agenda

Mon	Tue	Wed	Thu	Fri	Sat	Sun
28 SUMMER HOLIDAYS AUGUST BANK HO	29	30	31	1 Sept	2	3
4	5 Catering Fingerpr START OF TERM Y7	6 ALL STUDENTS BA	7 School Health Adv Y10 Parent / Carer	8 Y13 Geography Residential: Cranedale; departure 6 am Fri	9	10
11 Y13 Geography R MIDAS minibus tra	12 MIDAS minibus tra Y9 Parent / Carer Y11 Art Trip, Oxfor	13 MIDAS minibus tra Y8 Parent / Carer	14 Y11 Parent / Carer	15 Y7 Author Q&A Set	16	17
18	19 Y7 Parent / Carer	20 FoGMS AGM & Me Y9 Drama Trip; Gl	21 Jeans For Genes - School Health Adv Y6 Open Evening	22 Y11 Geography Trj	23	24
25 Y11 Drama GCSE	26 Y7 Sustainable Fas DEaR p3 Y6 Open Morning	27 School photos: Y7 An Evening with Je	28 Staff Fit Friday 3:4 Y10 RS Curriculum Y6 Open Morning	29	30	1 Oct

Events shown in time zone: United Kingdom Time

Google Calendar

[https://www.gms.bucks.sch.uk/?page\\_id=409](https://www.gms.bucks.sch.uk/?page_id=409)

Opportunities are Created • Potential is Realised • Excellence is Achieved

# Some Key Dates

- Y11 exam Information evening: **Thursday 23<sup>rd</sup> November**
- School photographs (Y11): **Monday 6<sup>th</sup> November**
- Careers Interviews: **October to December**
- Mock Exams: **17<sup>th</sup> January – 2<sup>nd</sup> February**
- Progress Reports issued this term: **Friday 20<sup>th</sup> October** and **Friday 1<sup>st</sup> March**
- Parents' and Carers' Evening: **Tuesday 16<sup>th</sup> April**
- Exam end: **approx. 19<sup>th</sup> June**
- GCSE Results: **22<sup>nd</sup> August**

# Y11 exam Information evening:

## Thursday 23<sup>rd</sup> November

### The aim:

- To inform of exam dates and expectations.
- Receive key information from Core Subject Heads
- Provide revision resource information and techniques



Great Marlow School

Excellence • Compassion • Integrity

# Progress Reports



Great Marlow School

Excellence • Compassion • Integrity

**Target grades** – aspirational

**Predicted grades** - If the student continues to work at the level they are working now, this is the grade we believe they will get in their exams in 2023

The mock exams scores are used internally to guide predicted grades alongside professional judgement of the teacher and planned interventions.



# Prefects



Great Marlow School

Excellence • Compassion • Integrity

## Responsibilities:

- Two duties per week
- Transition day support
- Open evenings support
- School events

Target setting for unsuccessful applicants begins next week.

I will open applications again for students that missed the opportunity to apply previously

# Information





**Great Marlow School**  
Excellence • Compassion • Integrity

Bobmore Lane, Marlow, Buckinghamshire SL7 1JE  
Telephone - 01628 483 752  
Company Registration No. 07690054

Welcome - News & Events - About Us - School Life - 6th Form - Curriculum - Parent & Carers - Student Area - Sport - Gallery

is a place where...



Posted on 31 Aug, 2022 in About GMS, Featured, General News

## Autumn Term 2022

GMS welcomes all students back for the 2022 autumn term in September. Year 7, Year 10 and Year 12 return on Monday 5th September for registration at 8.35. All year groups are in school (Years 7-13) on Tuesday 6th September for registration at 8.35. Full school uniform with correct footwear is expected for all students in Years 7 to 11. Those in the Sixth Form must adhere to the Sixth Form dress...

[Read More](#)

Posted on 5 Sep, 2022 | Comments Off

## GCSE Information Evening ...



Mrs Webster, Director of Learning for Year 10, is inviting all Year 10 parents and carers to a GCSE Parent Information Evening on Thursday 8th September, from 6-6.45 pm in the main hall. The purpose of the evening is to give relevant and up to date information to about Year 10 so that support for students comes from home and school together. There will be an...

[Read More](#)

Posted on 2 Sep, 2022 | Comments Off

## Tanzania Charity



Here in GMS we support a charity that sponsors the schooling of children in Tanzania. We are delighted to hear that Martha, one of our children, is now in the first term of secondary school; in Tanzania there are two academic terms, commencing in January, so she is half way through her first year. She is doing quite well achieving Division III in her mid-term...

[Read More](#)

Posted on 28 Aug, 2022 | Comments Off

## GCSE Excellence

... School we are

Search Our Site

Search

GMS Safeguarding

GMS SAFEGUARDING

PARENT INTERNET SAFETY

STUDENT ONLINE SAFETY

Links

Teacher Training

CPOMS Login

Google Search

MS 365 Apps | MS 365 Email

School Google Calendar

Examinations Information

Resources

Foldr

group4all Xpressions

See-Schools

Parental Support

The VOICE

Twitter

WisePay



**Great Marlow School**

Excellence • Compassion • Integrity



# Website

Keep up to date with GMS achievements and events on the Great Marlow School website.

• Excellence is Achieved



**Great Marlow School**

*Excellence • Compassion • Integrity*

# Friends of Great Marlow School

We are very lucky to have the support of FoGMS as they raise funds to support the wider school community.

**Last year FoGMS raised £25,000**

Recent letter outlines the many ways that you can support – many of these are quick and simple, or you can get stuck into the events run by FoGMS. The letter also outlines examples the additional resources the money raised has provided the school and your children in the past 3 years.

**Opportunities are Created • Potential is Realised • Excellence is Achieved**

# FoGMS



**Great Marlow School**

*Excellence • Compassion • Integrity*

**Great Marlow School**  
Excellence • Compassion • Integrity

Bobmore Lane, Marlow, Buckinghamshire SL7 1JE  
Telephone - 01628 483 752  
Company Registration No.07690054

Welcome - News & Events - About Us - School Life - 6th Form - Curriculum - Parent & Carers - Student Area - Sport - Gallery

### Friends of Great Marlow School

- Donate to FoGMS >>
- For FoGMS News [click here](#)
- Contact: [fogmschair@gmail.com](mailto:fogmschair@gmail.com)

All parents and carers are automatically members of Friends of Great Marlow School (FoGMS). FoGMS is an organisation that actively fundraises for the benefit of all the students in the school.

The association has helped raise large sums of money to provide facilities and equipment for GMS, which not otherwise afford.

At key points in the year, social and educational functions occur for parents, carers, staff and the wider community.

FoGMS principal role is to promote a strong understanding of the school and to provide a way for parents and carers to become actively involved.

The most popular events of the past year were: Christmas Sales.

The Friends of Great Marlow School also play an important role in the school's life. Evening, school productions and other performances.

#### Opportunities are Created - Potential is Realised

- Attendance Guide
- Bucks School Transport -
- Communication & Catering
- WisePay Payment System
- Friends of Great Marlow School
- Information Evenings
- Gift Aid
- Groupcall Xpressions -
- Letters Home
- Online Safety Resources
- Parents' Evening System
- Progress Review Guides
- School Uniform Shops -
- Special Educational Needs -
- The Voice - School Newsletter

We are very lucky to have the support of FoGMS as they raise funds to support the wider school community.



**Opportunities are Created • Potential is Realised • Excellence is Achieved**

# Our Roles



# Our Roles



**Great Marlow School**

*Excellence • Compassion • Integrity*

## **I Will...**

- Reward students
- Support students
- Educate students
- Monitor progress
- Communicate openly
- Respond as soon as able

## **Form Tutors will...**

- Be your first point of contact
- Utilise form time
- Celebrate successes
- Support progress
- Communicate effectively
- Work closely with DoL and SSO

## **You can...**

- Monitor Progress
- Have open and honest conversations
- Monitor and support with homework
- Encourage good habits
- Discuss student experiences

**Opportunities are Created • Potential is Realised • Excellence is Achieved**

# My commitment to you...



Great Marlow School  
Excellence • Compassion • Integrity

- ✓ ***You are never bothering me.***
- ✓ *I will usually respond to communication within 24 hours*
- ✓ *You might not get the outcome you intended, but I will always provide one with the interests of the students at the forefront of my mind*

[JWebster@gms.bucks.sch.uk](mailto:JWebster@gms.bucks.sch.uk)