



Great Marlow School

Excellence • Compassion • Integrity

Welcome to the Year 9
Parents' and Carers'
Information Evening

Tuesday 12th September 2023

Opportunities are Created • Potential is Realised • Excellence is Achieved

Year 9 Information Evening



Great Marlow School

Excellence • Compassion • Integrity

Aims

- To give you an insight into changes at the end of KS3 and the expectations we have of students.
- To point you in the right direction of help and support that is available to you as a parent/carer.
- To inform you of the support on offer within school and opportunities for communication.

Year 9 Vision and Values



My Personal Best

Students are self-motivated and take **responsibility** for their own learning.

Students show a **readiness** to learn and participate in the school day and school life. Students are punctual, polite and want to succeed.

Students are **resilient**, independent learners and to develop their organisational & time management skills.

Students demonstrate **resourcefulness** in order to overcome challenges and persevere when learning becomes more challenging.

Students **respect** the school environment, their peers and the wider school community

Students are **reflective** of their learning and actions and actively seek help and support when it is required.

Yr 9 Vision and Values



Great Marlow School

Excellence • Compassion • Integrity

Ultimate aim: To ensure all students achieve Excellent or Good in all their Attitude to Learning Scores

- Year 9s are identified as **compassionate, respectful** and **resilient** members of the school community
- All students feel confident in taking **responsibility** of selecting their GCSE optional subjects.
- Good communication between all three stakeholders - PARENTS/CARERS, STUDENTS and SCHOOL

Opportunities are Created • Potential is Realised • Excellence is Achieved

Student Support



Year 9 Student Support



Great Marlow School

Excellence • Compassion • Integrity

Miss H Hyde

Located in the KS3 Student Support Office (S block)

Continued strong relationship with cohort

- Consistent support given
- Consistent communication home
- Shared location with Mr S Taylor

Opportunities are Created • Potential is Realised • Excellence is Achieved

Student Support



Great Marlow School

Excellence • Compassion • Integrity

Assistant Headteacher & Director of Inclusion (Special Educational Needs): Mrs V Todd

Attendance Officer: Mrs S Radnedge

Pupil Premium Coordinator: Mrs A Gifford

Careers Officer: Mrs G Southon

The Year 9 Tutor team remains mostly the same!

This year, Mrs Singh is taking over from Mr Chapman to continue working as form tutor for 9E3.

Opportunities are Created • Potential is Realised • Excellence is Achieved

Form Tutors

9K1 – Mr Taylor

ntaylor@gms.bucks.sch.uk

9H1 – Mr Jones

djones@gms.bucks.sch.uk

9E1 – Mrs Dale

hdale@gms.bucks.sch.uk

9K2 – Mr Horler

phorler@gms.bucks.sch.uk

9H2 – Miss Porter

lporter@gms.bucks.sch.uk

9E2 – Mrs Clark / Mrs Kerr

cclark@gms.bucks.sch.uk
kkerr@gms.bucks.sch.uk

9K3 – Mrs Tilling/ Mr Merreywether

dtilling@gms.bucks.sch.uk
smerreywether@gms.bucks.sch.uk

9H3 – Miss Goodenough

cgoodenough@gms.bucks.sch.uk

9E3 – Mrs Singh

psingh@gms.bucks.sch.uk

First point of contact

Key Staff Members



Great Marlow School

Excellence • Compassion • Integrity

Neil Maguire

Designated Safeguarding
Lead (DSL)



Karen Craig

Deputy DSL



Anna Gifford

Safeguarding Officer



Kevin Ford

Safeguarding
Headteacher



Sheryl Paul

Safeguarding Officer



Opportunities are Created • Potential is Realised • Excellence is Achieved

Safeguarding and Wellbeing



- Online Safety – nationalonlinesafety.com
- Vaping – can contain harmful and potentially harmful substances, including:
 - Nicotine
 - Ultrafine particles that can be inhaled deep into the lungs
 - Flavourings such as diacetyl, a chemical linked to a serious lung disease
 - Volatile organic compounds
 - Cancer-causing chemicals
 - Heavy metals such as nickel, tin, and lead
- Mental Health - it is important to stay healthy

Bucks Mental Health Partnership



To help support the Mental Health of our young people, Great Marlow has teamed up with the Bucks Mental Health Support Team (MHST).


- Session 1 - Promoting positive behaviours - **Wednesday 11th October 6pm**
- Session 2 - Anxiety - **Tuesday 5th December 6pm**
- Session 3 - Low mood - **Wednesday 6th March 6pm**
- Session 4 - Self-harm - **Tuesday 30th April 6pm**

Details of how to sign up for the Parent Sessions delivered by MHST will follow in a separate, later correspondence

Curriculum and Homework Setting




Learning Ladders


**Great Marlow School**
Excellence • Compassion • Integrity


Bobmore Lane, Marlow, Buckinghamshire SL7 1JE
Telephone - 01628 483 752
Company Registration No.07690054


Welcome • News & Events • About Us • School Life • 6th Form • Curriculum • Parent & Carers • Student Area • Sport • Gallery


Departments A-Z


**Ancient History**


**Art & Design**


**Business**


**Citizenship, PSHE & Politics**


**Computer Science**


**Design & Technology**


**Drama**


**English**


**French**


**Geography**


**History**


**Law**


**Mathematics**


**Media Studies**


**Music**

**Physical Education**

**Religious Studies**

**Science**

**Spanish**

**Visual Arts**

Curriculum Structure

Departments A-Z

Detentions

Examinations Information

Homework

School Day Timetable

Welcome • News & Events • About Us • School Life • 6th Form • Curriculum • Parent & Carers • Student Area • Sport • Gallery

Geography Department

ABOUT GEOGRAPHY

Geography is the study of the Earth's landscapes, people, places and environments. Stated simply, it is about the world in which we live. Geography builds many of the physical concepts studied in science and investigates the impact of these on the world's people.

Geography links this understanding of human and physical processes to places and regions - recognising the big differences in cultures, economies and environments across the world. Understanding the causes of differences and inequalities between places and people are a key part of modern geography.

Geography provides an ideal framework for relating other subject areas. It is not surprising that those trained as geographers are often involved in global decision-making, such as politics or working to manage the challenges of climate change and sustainable development.

Adapted from the Royal Geographical Society



Geography at Great Marlow School

Learning Ladders

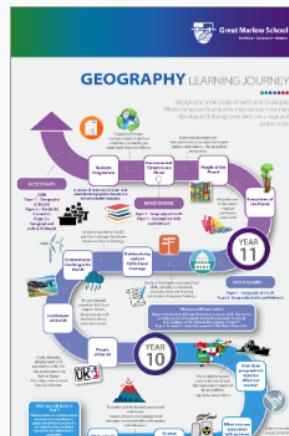
Key Stage 3 Geography

Key Stage 4 Geography

Key Stage 5 Geography

Career Options in Geography

GEOGRAPHY KS3 & KS4



GEOGRAPHY KS5





Great Marlow School

Excellence • Compassion • Integrity

Planners

Students to note ALL homework and deadlines in their planners when set.

Microsoft Teams

Staff to post homework assignment details on MS Teams – calendar

Parents

Encourage completion of homework to the best of the student's ability

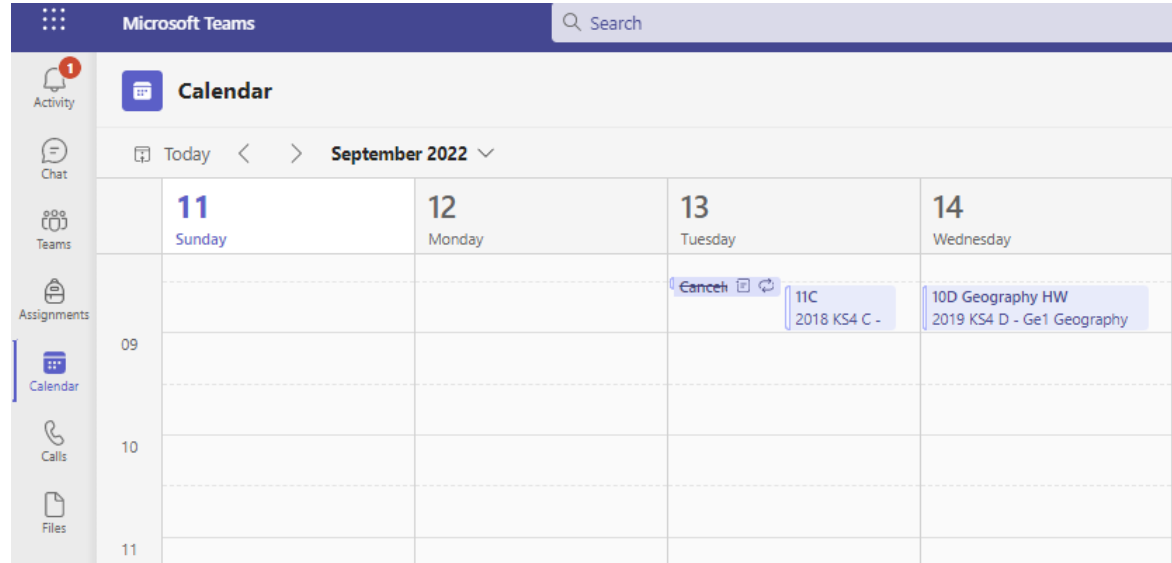
Opportunities are Created • Potential is Realised • Excellence is Achieved

Microsoft Teams



What is Microsoft Teams?

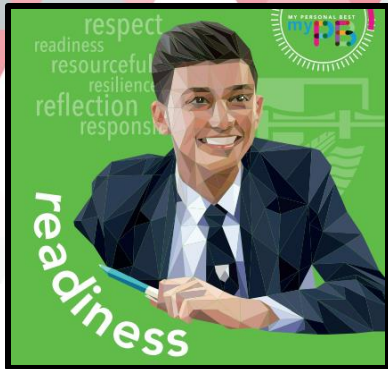
- It is used for the setting of assignments and the marking of work
- Calendar function provides useful overview of when homework is due in



Uniform & Equipment Reminders



Uniform & Equipment



- **Hair** – No extreme styles or unnatural looking colours
- **Nails** – Nude colours only, no false/acrylic nails
- **Jewellery** – One simple ring, a single stud in each ear (each removed for PE)
- **Skirts** – Not rolled at the waistband, logo clearly displayed
- **Shoes** – Smart and black, not trainers or trainer-style
- **Sports equipment** – in a bag, only used in designated areas at specified times.
- **Trousers** – not jeans
- **Jumpers** – Black V neck jumper, no branded sweatshirts or hoodies. Jumper is an additional layer – blazer must be worn
- **Blazers** – To be worn every day, COATS must be worn over the top if required
- **Tie** – worn every day

Essentials

- ☐ Planner
- ☐ Pencil
- ☐ Pen x2
- ☐ Ruler
- ☐ Glue stick
- ☐ Calculator



A note from home is needed for any reason that you are unable to wear the appropriate uniform – this will then be considered by tutor/DoL

Attendance & lates

Every school day matters!



Good attendance and punctuality underpin everything that we do.

90% attendance means up to 4 hours learning missed every week plus homework and preparation for controlled assessments.

1. If you are late to school, there will be a sanction of a 15 minute break detention
2. If you fail to attend, you will have a 30 minute after school detention on the next Thursday
3. If you fail to attend, you will have a 1hr after school detention on the Friday



Attend Today, Achieve Tomorrow

Tutor Time





Great Marlow School

Excellence • Compassion • Integrity

GREAT MARLOW SCHOOL'S CODE OF CONDUCT

RESPECT yourself

Attend school regularly; be punctual to lessons and registration. Take care of your appearance: wear a tidy and correct uniform.

RESPECT your staff

Ensure that all work is completed on time and to the best of your ability. Adopt a positive attitude at all times.

RESPECT your peers

Show courtesy and consideration for the beliefs, views and property of others. Use appropriate language at all times.

RESPECT your learning

Be prepared, bring the correct equipment for your learning.

Be considerate of your behaviour and how this impacts on others.

RESPECT your environment

Take care of your surroundings: do not drop litter.

The school is a healthy, safe environment: drugs, cigarettes, alcohol and chewing gum is not tolerated.

EXPECTATIONS

Great Marlow School rewards and develops students that show:

Readiness

Reflection

Resilience

Resourcefulness

Respect

Responsibility

THE ROLE OF THE FORM TUTOR

To ensure that students settle into Year 9 well!

To register students every morning at **8.35am** - 9 am.

To lead a form time activity every morning.

To check uniform.

To check and sign homework planners.

To monitor academic progress.

To be the first point of contact for your parents/carers.

To support your emotional, physical and academic well-being.



Great Marlow School

Excellence • Compassion • Integrity

Updated Timings of the normal school day






8:30 am	<i>Arrive through the green gates</i>
8:35am	<i>Registration</i>
9 – 10am	<i>Lesson 1</i>
10-11am	<i>Lesson 2</i>
11- 11:30am	<i>Break 1</i>
11:30-12:30pm	<i>Lesson 3</i>
12:30-1pm	<i>Break 2 (canteen – library entrance)</i>
1pm– 2pm	<i>Lesson 4</i>
2pm – 3pm	<i>Lesson 5</i>

Tutor Time



Great Marlow School

Excellence • Compassion • Integrity

MONDAY	TUESDAY	WEDNESDAY	THURSDAY	FRIDAY
 Book Surgery <u>READINESS</u> CHECKS: PLANNERS AND EQUIPMENT	 TFTW REFLECTION RSHE Week 2, Period 3	Assembly  & Uniform Check	 READING PROJECT & NEXT STEPS ACTIVITIES (E.G CAREERS, OPTIONS AND REVISION SKILLS)	 THE NEWS QUIZ

RSHE — Relationships, Sex and Health Education



Great Marlow School

Excellence • Compassion • Integrity

Program of Study for Year 9

*September – November: **Pregnancy and Choices***

*December – January: **Careers and GCSE options***

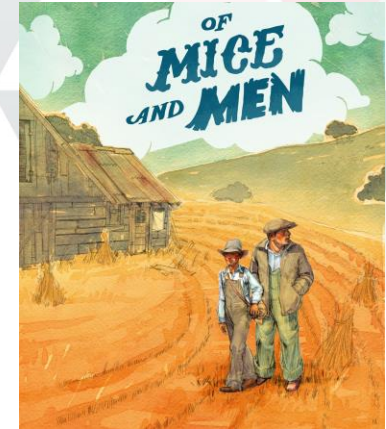
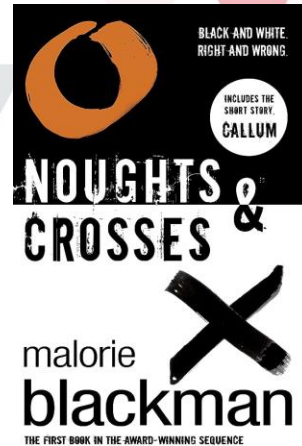
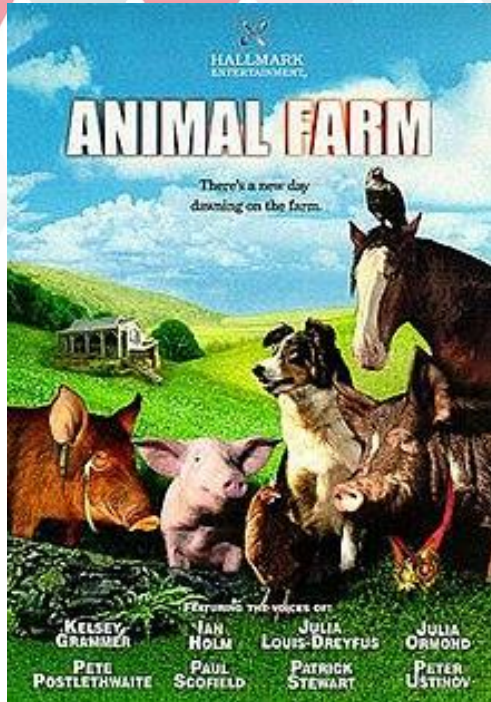
*February – April: **Relationships and Sex***

*May – June: **Drugs and Alcohol***

*June – July: **Gangs***



GMS Reading Project



Important Dates and Events





Important Dates

Mon	Tue	Wed	Thu	Fri	Sat	Sun
30	31	1 Nov	2	3	4	5
Y11 Careers Interviews						Selected Y11-13 F
Y9/10 Progress Re	Book Fair; library; 8 - 8.30 am; first break; 3 - 4 pm					
Appraisal Target St	Y13 RS Curriculum	LT Meeting 3:15 -				
Week 2	Y13 Parent / Carer					
6	7	8				12
Book Fair; library; 8 - 8.30 am; first break; 3 - 4 pm						
Y11 Careers Interviews						
School photos: Y8;	GCSE Autumn Re-s	GCSE Autumn Re-s				
1 pm: Y9/10 Progr	Sixth Form Open E	9 am HoD deadline	DoL Meeting 3:15	Y9/10 Progress Re		
Week 1		LT Meeting 3:15 -				
13	14	15	16	17	18	19
Y11 Careers Interviews					Selected Y11-13 U	
GCSE Autumn Re-s	Audit Meeting: 6 -	Sixth Form Music F	School Health Adv	Personnel Meeting:		
Book Fair; library;	LT Meeting 3:15 -	Tutor Meeting 3:15	Learning & Curricu			
Y7/8 Progress Revi			T&L Meeting 3:15			
Week 2						
20	21	22	23	24	25	26
Y11 Careers Interviews						Selected Y11-13 W
Week 1	Finance & Resource	1 pm: Y7/8 Progre	Y11 Mock Exam In	Staff Fit Friday 3:4		
	Redgrave Sports C	LT Meeting 3:15 -				
	Dept Meeting 3:15					
27	28	29	30	1 Dec	2	3
Y11 Careers Interviews					Y9 - 11; Wycliffe S	Invited rowers only
9 am: HoD final de	Y11 Elevate Sessio	Y7 Progress Review	Y7 Parent / Carer E	Sixth Form Applica		
Week 2		LT Meeting 3:15 -		Y7-11 Flu Immunis		
				Y8 Progress Review		

Y9/10 Progress Reviews issued

When Friday, 10 Nov 2023

[more details»](#) [copy to my calendar»](#)

[SCHOOL GOOGLE CALENDAR](#)



Progress Reports: Working At Grades

First reports this year: Friday 10th November

Working At Standard						
YEAR 7	Foundation	Emerging	Secure	Advanced		Exceptional
YEAR 8	Foundation		Emerging	Secure	Advanced	Exceptional
YEAR 9	Foundation			Emerging	Secure	Adv Exceptional

Rewards:

- Postcards home
- DOL Certificates
- Achievement Points
- Positive meetings with DOL/SSO

Year 9 GCSE Options



Great Marlow School

Excellence • Compassion • Integrity

GCSE Options Evening – Wednesday 21st February

In January, we will begin the well-rehearsed process of supporting all Year 9 Students in selecting their GCSE optional subjects – please do not worry!

Parents/Carers

You may support your child(ren) by beginning to discuss the types of careers/topics that interest them most

Opportunities are Created • Potential is Realised • Excellence is Achieved

Communication



Form Tutors

9K1 – Mr Taylor

ntaylor@gms.bucks.sch.uk

9H1 – Mr Jones

djones@gms.bucks.sch.uk

9E1 – Mrs Dale

hdale@gms.bucks.sch.uk

9K2 – Mr Horler

phorler@gms.bucks.sch.uk

9H2 – Miss Porter

lporter@gms.bucks.sch.uk

9E2 – Mrs Clark / Mrs Kerr

cclark@gms.bucks.sch.uk
kkerr@gms.bucks.sch.uk

9K3 – Mrs Tilling/ Mr Merreywether

dtilling@gms.bucks.sch.uk
smerreywether@gms.bucks.sch.uk

9H3 – Miss Goodenough

cgoodenough@gms.bucks.sch.uk

9E3 – Mrs Singh

psingh@gms.bucks.sch.uk

First point of contact

Website



Great Marlow School

Excellence • Compassion • Integrity

The screenshot shows the Great Marlow School website. At the top, the school's name and motto 'Excellence • Compassion • Integrity' are displayed alongside contact information: 'Bobmore Lane, Marlow, Buckinghamshire SL7 1JE', 'Telephone - 01628 483 752', and 'Company Registration No. 07690054'. A navigation menu includes links for 'Welcome', 'News & Events', 'About Us', 'School Life', '6th Form', 'Curriculum', 'Parent & Carers', 'Student Area', 'Sport', and 'Gallery'. Below the menu is a large banner image of four smiling students. The main content area features a news article titled 'Open Evening and Open Mornings' with a photo of the school building and a brief description of the event. To the right of the article is a search bar and a sidebar with links for 'GMS Safeguarding', 'Parent Internet Safety', 'Student Online Safety', and 'Links'. At the bottom, there are two more articles: 'FoGMS' and 'Eco-Warriors Gardening'.

Great Marlow School
Excellence • Compassion • Integrity

Bobmore Lane, Marlow, Buckinghamshire SL7 1JE
Telephone - 01628 483 752
Company Registration No. 07690054

Welcome • News & Events • About Us • School Life • 6th Form • Curriculum • Parent & Carers • Student Area • Sport • Gallery

Posted on 7 Sep, 2023 | In About GMS, Featured

Open Evening and Open Mornings

We are delighted to share the dates of Great Marlow School Open Evening and Open Mornings. These are extremely busy and popular events, so we have taken a number of steps to support the smooth running of the evening and subsequent Open Mornings. To help manage the number of visitors, we encourage parents of Year 6 students only attend the Open Evening or an Open Morning this year and for parents of Year 5 to wait until next year. To attend the Open Evening, or one of the Open Mornings, parents/...

Read More

Posted on 11 Sep, 2023 | Comments Off

FoGMS

Friends of Great Marlow School (FoGMS) supports GMS throughout the year by fundraising to make the school

Posted on 11 Sep, 2023 | Comments Off

Eco-Warriors Gardening

GMS's Eco-Warrior gardening enthusiasts have been watering the plants in the recent heatwave to save them from

Teacher Training
CPOMS Login
Google Search
MS 365 Apps | MS 365 Email
School Google Calendar
Examinations Information

Keep up to date with GMS news, achievements and events on the Great Marlow School website.

[Link to school website...](#)

Opportunities are Created • Potential is Realised • Excellence is Achieved

FoGMS



Great Marlow School

Excellence • Compassion • Integrity

**Great Marlow School**
Excellence • Compassion • Integrity

Bobmore Lane, Marlow, Buckinghamshire SL7 1JE
Telephone - 01628 483 752
Company Registration No.07690054

Welcome » News & Events » About Us » School Life » 6th Form » Curriculum » **Parent & Carers »** Student Area » Sport » Gallery

Friends of Great Marlow School

[Donate to FoGMS >>](#)
[For FoGMS News click here](#)
[Contact: fogmschair@gmail.com](mailto:fogmschair@gmail.com)



All parents and carers are automatically members of Friends of Great Marlow School (FoGMS). FoGMS is an organisation that actively fundraises for the benefit of all the students in the school.

The association has helped raise large sums of money to provide facilities and equipment for GMS, which it could not otherwise afford.

At key points in the year, social and educational functions occur for parents, carers, staff and the wider community.



FoGMS principal role is to promote a strong understanding and co-operation between home and school. It is a way for parents and carers to become actively involved in the school.

The most popular events of the past year were: Christmas Fayre, Comedy Evening, Year 7 Disco and Car Boot Sales.

The Friends of Great Marlow School also play an important role in helping at school events such as Open Evening, school productions and other performances.



Opportunities are Created • Potential is Realised • Excellence is Achieved

FoGMS



Great Marlow School

Excellence • Compassion • Integrity

A few examples of the many additional resources funded just in the past 3 years by FoGMS for all the students at GMS are:

- All inclusive OUTDOOR SEATING for the students to be able to sit, eat and relax in the school grounds
- Replacement of all the stage curtains and theatre tabs in the main school hall
- Gifted a book for all the incoming year 7's to enjoy a Summer read
- Purchased music stands, trollies and Djembe Drums for the Music Department which will be used by the whole school
- Final payment made for leases of the two minibuses at an annual cost of £11,040.
- PE cycling initiative which has proved incredibly popular with the students was given £3,250
- Purchased yoga mats for Miss Addy's after school yoga club
- A new projector in the drama department M10 room which is used by all students.
- A donation of £7,500 towards the new garden room reflection and learning space
- Logo/d sweatshirts for the Sports Leaders programme

Opportunities are Created • Potential is Realised • Excellence is Achieved

FoGMS



Great Marlow School

Excellence • Compassion • Integrity

THIS TERM'S FUNDRAISING EVENTS FOR DIARIES (detailed info will follow in due course)

- **FoGMS AGM** - Wednesday 20th September 6.30 in Room T4 - All Welcome
- **Year 8 Disco** - Thursday 12th October 7-9pm
- **Bag2School Collection** - Wednesday 27th September am collection (more details about bag2school will follow nearer the time)
- **Year 7 Disco** - Thursday 19th October 7-9pm - a chance for the Year 7's to celebrate their move up to secondary school
- **Christmas Door Wreath Making with Joanne Caldwell** - Thursday 30th November
Bar opens 7pm at school, ticket price TBA, no experience required, a fun evening with friends creating your own stunning floral wreath for your front door under the guidance of the amazing Joanne
- **300 Club** - £20 annual subscription with 2 winning numbers selected each month for a chance to win £150 1st prize or £50 2nd prize

Opportunities are Created • Potential is Realised • Excellence is Achieved

Our Roles





Our Roles



Great Marlow School

Excellence • Compassion • Integrity

I Will...

- Reward students
- Support students
- Educate students
- Monitor progress
- Communicate openly
- Respond as soon as able

Form Tutors will...

- Be your first point of contact
- Utilise form time
- Celebrate successes
- Support progress
- Communicate effectively
- Work closely with DoL and SSO

You can...

- Monitor Progress
- Have open and honest conversations
- Monitor and support with homework
- Encourage good habits
- Discuss student experiences



Opportunities are Created • Potential is Realised • Excellence is Achieved

My commitment to you...



Great Marlow School
Excellence • Compassion • Integrity

- ✓ ***You are never bothering me.***
- ✓ *I will usually respond within 24 hours to communication.*
- ✓ *You might not get the outcome you intended, but I will always provide one with the interests of the students at the forefront of my mind*

staylor@gms.bucks.sch.uk

Yr9 Parent / Carer Information Evening

