



Great Marlow School

Excellence • Compassion • Integrity

Welcome to our
**Year 10 GCSE
Information Evening**

Opportunities are Created • Potential is Realised • Excellence is Achieved

Year 10 Information Evening



Great Marlow School
Excellence • Compassion • Integrity

Aims

- To give you an insight into changes at GCSE level and the expectations we have of students.
- To point you in the right direction of help and support that is available to you as a parent/carer
- To inform you of the support on offer within school and opportunities for communication

Year 10 Vision



My Personal Best

Students are self-motivated and take **responsibility** for their own learning.

Students show a **readiness** to learn and participate in the school day and school life. Students are punctual, polite and want to succeed.

Students are **resilient**, independent learners and to develop their organisational & time management skills.

Students demonstrate **resourcefulness** in order to overcome challenges and persevere when learning becomes more challenging.

Students **respect** the school environment, their peers and the wider school community

Students are **reflective** of their learning and actions and actively seek help and support when it is required.

Year 10 Vision & Values



Great Marlow School
Excellence • Compassion • Integrity

Ultimate aim: To ensure all students achieve Excellent or Good in all their Attitude to Learning Scores

- Year 10s are identified as **compassionate, respectful** and **resilient** members of the school community
- All students feel confident in taking **responsibility** for their GCSE studies
- Good communication between all three stakeholders - PARENTS/CARERS, STUDENTS and SCHOOL

KS4 Curriculum



Grading System

- **GCSE students work towards Grades 9-1**

9

8

7

High Achievement

6

5

Strong Pass

4

Standard Pass

3

2

1

U

Ungraded

- Allows for greater identification of exceptional performance at the top end.
- Allows differentiation across passed grades.
- Employers can identify if students have taken new more challenging GCSE, or an old reformed GCSE.

Curriculum changes



Great Marlow School

Excellence • Compassion • Integrity

Core subjects (English, Maths and Science) are taught in houses Eagles, Hawks and Kites.

Students are set by ability within these subjects.

Core PE for all students; set, as previously, dependent on skills displayed.

RSHE (Relationships, Sex and Health Education)

One lesson per week (with form tutor and one other teacher).

Covers important topics such as; Mental wellbeing and health, sex and relationships, managing money, careers and other life skills.

There is NO GCSE for this course.

GCSE Options Classes



Great Marlow School

Excellence • Compassion • Integrity

Class grouping depends only on the combination of options chosen.

Students will be taught in mixed-ability groups with peers from across the cohort.

Classroom teaching is differentiated to support, stretch and challenge all learners.

For information about the different GCSE exam boards and courses there is an information booklet available on the website to access.

GMS homepage – About us – GCSE Options Information

Learning Ladders

For information on the learning journey of your child(ren) please see our new Learning Ladders on the school website. These are available under the "curriculum" tab

Great Marlow School
Excellence • Compassion • Integrity

Bobmore Lane, Marlow, Buckinghamshire SL7 1JE
Telephone - 01628 483 752
Company Registration No.07690054

Welcome • News & Events • About Us • School Life • 6th Form • Curriculum • Parent & Carers • Student Area • Sport • Gallery

Departments A-Z

- Ancient History
- Art & Design
- Business
- Citizenship, PSHE & Politics
- Computer Science
- Design & Technology
- Drama
- English
- French
- Geography
- History
- Law
- Mathematics
- Media Studies

Curriculum Structure
Departments A-Z
Detentions
Examinations Information
Homework
School Day Timetable

Welcome • News & Events • About Us • School Life • 6th Form • Curriculum • Parent & Carers • Student Area • Sport • Gallery

Geography Department

ABOUT GEOGRAPHY

Geography is the study of the Earth's landscapes, people, places and environments. Stated simply, it is about the world in which we live. Geography builds many of the physical concepts studied in science and investigates the impact of these on the world's people.

Geography links this understanding of human and physical processes to places and regions - recognising the big differences in cultures, economies and environments across the world. Understanding the causes of differences and inequalities between places and people are a key part of modern geography.

Geography provides an ideal framework for relating other subject areas. It is not surprising that those trained as geographers are often involved in global decision-making, such as politics or working to manage the challenges of climate change and sustainable development.

Adapted from the Royal Geographical Society



Geography at Great Marlow School

Learning Ladders

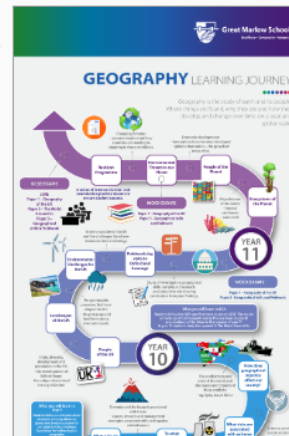
Key Stage 3 Geography

Key Stage 4 Geography

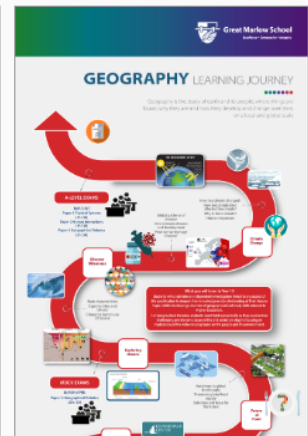
Key Stage 5 Geography

Career Options in Geography

GEOGRAPHY KS3 & KS4



GEOGRAPHY KS5



Religious Studies drop-down sessions



Great Marlow School

Excellence • Compassion • Integrity

- Students will participate in 3 two-hour 'drop-down' sessions
- Utilise discussion, debate and problem-solving
- Aims to support the wider vision and values of the school
- Meets our statutory obligations by;
 - ✓ Inspiring students to be compassionate contributors to a better society
 - ✓ Demonstrating 'My Personal Best' with particular focus on: reflection, resilience and respect

Y10 work place
experience day in
July - TBC

Term 1	Term 2	Term 3
Religion, belief and the individual & home	Religion, belief and the community	Religion, belief and human identity & morality

Homework Setting





Planners

Students to note ALL homework and deadlines in their planners when set.

Microsoft Teams

Staff to post homework assignment details on MS Teams – calendar

Parents

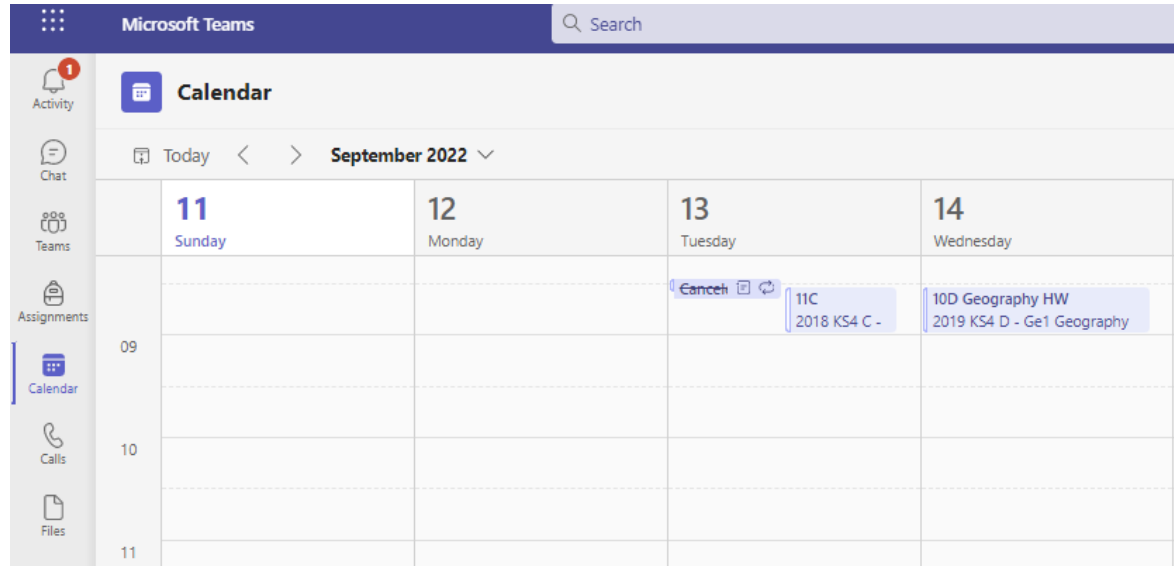
Encourage completion of homework to the best of the student's ability

Microsoft Teams



What is Microsoft Teams?

- It is used for the setting of assignments and the marking of work
- Calendar function provides useful overview of when homework is due in



1:1 Devices

The use of technology is embedded into many of our school subjects and whilst we have a some devices in departments for student use, it is highly beneficial to the students to have access to their own device. This is not essential.

We recommend a device that is able to run the Microsoft 365 programmes. Subscription to this is free to the student and linked to their school login.

Support for students



Year 10 Student Support



Great Marlow School

Excellence • Compassion • Integrity

Miss Frankie Tuddenham

**Director of Learning Year 10 &
KS4**



Mrs Jaqueline Spencer

Year 10 Student Support Officer



- Continued strong relationship with cohort
- Consistent support given
- Consistent communication home

Located in the KS4 Office (opposite G block)

Opportunities are Created • Potential is Realised • Excellence is Achieved

Key Staff Members



Great Marlow School

Excellence • Compassion • Integrity

Neil Maguire

Designated Safeguarding
Lead (DSL)



Karen Craig

Deputy DSL



Anna Gifford

Safeguarding Officer



Kevin Ford

Safeguarding
Headteacher



Sheryl Paul

Safeguarding Officer



Opportunities are Created • Potential is Realised • Excellence is Achieved

Student Support



Great Marlow School

Excellence • Compassion • Integrity

Assistant Headteacher & Director of Inclusion (Special Educational Needs): Mrs V Todd

Attendance Officer: Mrs S Radnedge

Pupil Premium Coordinator: Mrs A Gifford

Careers Officer: Mrs G Southon

The Year 10 Tutor team remains mostly the same!

This year, we welcome Mr Pulsford and Mrs Yadav to the team.

Opportunities are Created • Potential is Realised • Excellence is Achieved

Safeguarding and Wellbeing



- Online Safety – nationalonlinesafety.com
- Vaping – can contain harmful and potentially harmful substances, including:
 - Nicotine
 - Ultrafine particles that can be inhaled deep into the lungs
 - Flavourings such as diacetyl, a chemical linked to a serious lung disease
 - Volatile organic compounds
 - Cancer-causing chemicals
 - Heavy metals such as nickel, tin, and lead
- Mental Health - it is important to stay healthy

Bucks Mental Health Partnership



To help support the Mental Health of our young people, Great Marlow has teamed up with the Bucks Mental Health Support Team (MHST).

Workshop evenings

1. Promoting positive behaviours - Wednesday 11th October 6pm
2. Anxiety - Tuesday 5th December 6pm
3. Low mood - Wednesday 6th March 6pm
4. Self-harm - Tuesday 30th April 6pm

Details of how to sign up for the in person Parent Sessions delivered by MHST will follow in a separate, later correspondence

Tutor Time





Year 10 Form Timetable

Mon

Equipment,
planner &
uniform
check



Tues

TFTW / Form
tutor activity
/ RSHE



Wed

Reading
project



Thurs

Assembly



Fri

News day

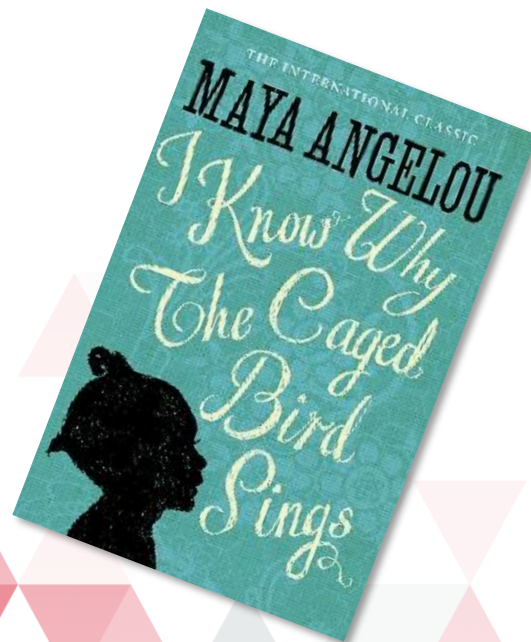
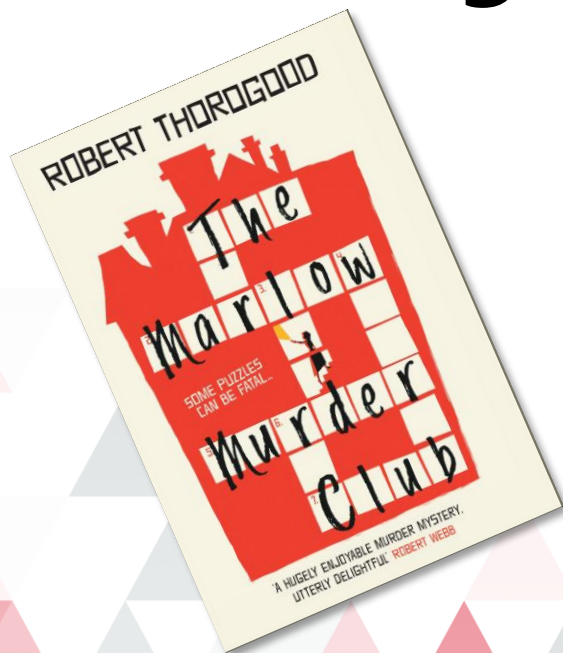


GMS Reading Project



Great Marlow School

Excellence • Compassion • Integrity

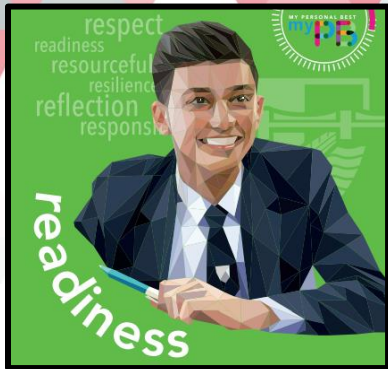


- Year 10 reading project books
- The reading project is all about exposure to a range of authors, genres and language
- A growing number of academic studies show that promoting reading can have a major impact on children and adults and their future
- A reminder that these are not the GCSE exam texts

Uniform & Equipment Reminders



Uniform & Equipment



- **Hair** – No extreme styles or unnatural looking colours
- **Nails** – Nude colours only, no false/acrylic nails
- **Jewellery** – One simple ring, a single stud in each ear (each removed for PE)
- **Skirts** – Not rolled at the waistband, logo clearly displayed
- **Shoes** – Smart and black, not trainers or trainer-style
- **Sports equipment** – in a bag, only used in designated areas at specified times.
- **Trousers** – not jeans
- **Jumpers** – Black V neck jumper, no branded sweatshirts or hoodies. Jumper is an additional layer – blazer must be worn
- **Blazers** – To be worn every day, COATS must be worn over the top if required
- **Tie** – worn every day

Essentials

- ☐ Planner
- ☐ Pencil
- ☐ Pen x2
- ☐ Ruler
- ☐ Glue stick
- ☐ Calculator



A note from home is needed for any reason that you are unable to wear the appropriate uniform – this will then be considered by tutor/DoL

Attendance & lates

Every school day matters!



Good attendance and punctuality underpin everything that we do.

90% attendance means up to 4 hours learning missed every week plus homework and preparation for controlled assessments.

1. If you are late to school, there will be a sanction of a 15 minute break detention
2. If you fail to attend, you will have a 30 minute after school detention on the next Thursday
3. If you fail to attend, you will have a 1hr after school detention on the Friday



Attend Today, Achieve Tomorrow

Important Dates



Important Dates



Great Marlow School

Excellence • Compassion • Integrity

School Google Calendar

Today: September 2023

Print Week Month Agenda

Mon	Tue	Wed	Thu	Fri	Sat	Sun
28 SUMMER HOLIDAYS AUGUST BANK HO	29	30	31	1 Sept	2	3
4	5 Catering Fingerpr START OF TERM Y7	6 ALL STUDENTS BA	7 School Health Adv Y10 Parent / Carer	8 Y13 Geography Residential: Cranedale; departure 6 am Fri	9	10
11 Y13 Geography R MIDAS minibus tra	12 MIDAS minibus tra Y9 Parent / Carer 1 Y11 Art Trip, Oxfor	13 MIDAS minibus tra Y8 Parent / Carer 1	14 Y11 Parent / Carer	15 Y7 Author Q&A Set	16	17
18	19 Y7 Parent / Carer 1	20 FoGMS AGM & Mee Y9 Drama Trip; Glc	21 Jeans For Genes - School Health Adv Y6 Open Evening (22 Y11 Geography Trj	23	24
25 Y11 Drama GCSE	26 Y7 Sustainable Fas	27 DEaR p3 Y6 Open Morning (28 School photos: Y7 An Evening with Je	29 Staff Fit Friday 3:4 Y10 RS Curriculum Y6 Open Morning (30	1 Oct

Events shown in time zone: United Kingdom Time

Google Calendar

https://www.gms.bucks.sch.uk/?page_id=409

Opportunities are Created • Potential is Realised • Excellence is Achieved

Progress Reports



Great Marlow School
Excellence • Compassion • Integrity

First one of autumn term- ATL and AFD **only**

After that students' target grades and predicted grades will be on their progress reports

Predicted grade - If the student continues to work at the level they are working now, this is the grade we believe they will get in their exams in 2024

Prefects



Great Marlow School

Excellence • Compassion • Integrity

Responsibilities:

- Two duties per week
- Transition day support
- Open evenings support
- School events

Application in Spring term:

- Job advert on GMS website
- All students produce CV
- Letter of application to DoL

Second round of application later in year

Opportunities are Created • Potential is Realised • Excellence is Achieved

Communication



Communication



Great Marlow School

Excellence • Compassion • Integrity

For general information: info@gms.bucks.sch.uk

For attendance: attendance@gms.bucks.sch.uk

For pastoral support/first contact:

10K1 Mrs Chenery - DChenery@gms.bucks.sch.uk

10K2 Mr Philpott - IPhilpott@gms.bucks.sch.uk

10K3 Mr Pulsford - rpulsford@gms.bucks.sch.uk

10H1 Mr James - JJames@gms.bucks.sch.uk

10H2 Miss Muttitt - GMuttitt@gms.bucks.sch.uk

10H3 Mr Ouedraogo - mouedraogo@gms.bucks.sch.uk

10E1 Miss Ashby - mashby@gms.bucks.sch.uk

10E2 Mrs Perman - aperman@gms.bucks.sch.uk

10E3 Mrs Yadav - myadav@gms.bucks.sch.uk

For further pastoral/general Year 10 support:

Director of Learning - ftuddenham@gms.bucks.sch.uk

Opportunities are Created • Potential is Realised • Excellence is Achieved



Great Marlow School
Excellence • Compassion • Integrity

Bobmore Lane, Marlow, Buckinghamshire SL7 1JE
Telephone - 01628 483 752
Company Registration No. 07690054

Welcome - News & Events - About Us - School Life - 6th Form - Curriculum - Parent & Carers - Student Area - Sport - Gallery

is a place where...



Posted on 31 Aug, 2022 in About GMS, Featured, General News

Autumn Term 2022

GMS welcomes all students back for the 2022 autumn term in September. Year 7, Year 10 and Year 12 return on Monday 5th September for registration at 8.35. All year groups are in school (Years 7-13) on Tuesday 6th September for registration at 8.35. Full school uniform with correct footwear is expected for all students in Years 7 to 11. Those in the Sixth Form must adhere to the Sixth Form dress...

[Read More](#)

Posted on 5 Sep, 2022 | Comments Off

GCSE Information Evening ...



Mrs Webster, Director of Learning for Year 10, is inviting all Year 10 parents and carers to a GCSE Parent Information Evening on Thursday 8th September, from 6-6.45 pm in the main hall. The purpose of the evening is to give relevant and up to date information to about Year 10 so that support for students comes from home and school together. There will be an...

[Read More](#)

Posted on 2 Sep, 2022 | Comments Off

Tanzania Charity



Here in GMS we support a charity that sponsors the schooling of children in Tanzania. We are delighted to hear that Martha, one of our children, is now in the first term of secondary school; in Tanzania there are two academic terms, commencing in January, so she is half way through her first year. She is doing quite well achieving Division III in her mid-term...

[Read More](#)

Posted on 28 Aug, 2022 | Comments Off

GCSE Excellence

Search Our Site

Search

GMS Safeguarding

GMS SAFEGUARDING

PARENT INTERNET SAFETY

STUDENT ONLINE SAFETY

Links

Teacher Training
CPOMS Login
Google Search
MS 365 Apps | MS 365 Email
School Google Calendar
Examinations Information

Resources



Great Marlow School
Excellence • Compassion • Integrity



Website

Keep up to date with GMS achievements and events on the Great Marlow School website.

• Excellence is Achieved

FoGMS



Great Marlow School

Excellence • Compassion • Integrity

Great Marlow School
Excellence • Compassion • Integrity

Bobmore Lane, Marlow, Buckinghamshire SL7 1JE
Telephone - 01628 483 752
Company Registration No.07690054

Welcome - News & Events - About Us - School Life - 6th Form - Curriculum - Parent & Carers - Student Area - Sport - Gallery

Friends of Great Marlow School

- Donate to FoGMS >>
- For FoGMS News [click here](#)
- Contact: fogmschair@gmail.com

All parents and carers are automatically members of Friends of Great Marlow School (FoGMS). FoGMS is an organisation that actively fundraises for the benefit of all the students in the school.

The association has helped raise large sums of money to provide facilities and equipment for GMS, which not otherwise afford.

At key points in the year, social and educational functions occur for parents, carers, staff and the wider community.

FoGMS principal role is to promote a strong understanding of the school and to provide a way for parents and carers to become actively involved.

The most popular events of the past year were: Christmas Sales.

The Friends of Great Marlow School also play an important role in the school's life. Evening, school productions and other performances.

Opportunities are Created - Potential is Realised

- Attendance Guide
- Bucks School Transport -
- Communication & Catering
- WisePAY Payment System
- Friends of Great Marlow School
- Information Evenings
- Gift Aid
- Groupcall Xpressions -
- Letters Home
- Online Safety Resources
- Parents' Evening System
- Progress Review Guides
- School Uniform Shops -
- Special Educational Needs -
- The Voice - School Newsletter

We are very lucky to have the support of FoGMS as they raise funds to support the wider school community.

Opportunities are Created • Potential is Realised • Excellence is Achieved

Our Roles



Our Roles



Great Marlow School

Excellence • Compassion • Integrity

I Will...

- Reward students
- Support students
- Educate students
- Monitor progress
- Communicate openly
- Respond as soon as able

Form Tutors will...

- Be your first point of contact
- Utilise form time
- Celebrate successes
- Support progress
- Communicate effectively
- Work closely with DoL and SSO

You can...

- Monitor Progress
- Have open and honest conversations
- Monitor and support with homework
- Encourage good habits
- Discuss student experiences

Opportunities are Created • Potential is Realised • Excellence is Achieved

My commitment to you...



Great Marlow School
Excellence • Compassion • Integrity

- ✓ ***You are never bothering me.***
- ✓ *I will usually respond to communication within 24 hours*
- ✓ *You might not get the outcome you intended, but I will always provide one with the interests of the students at the forefront of my mind*

ftuddenham@gms.bucks.sch.uk